

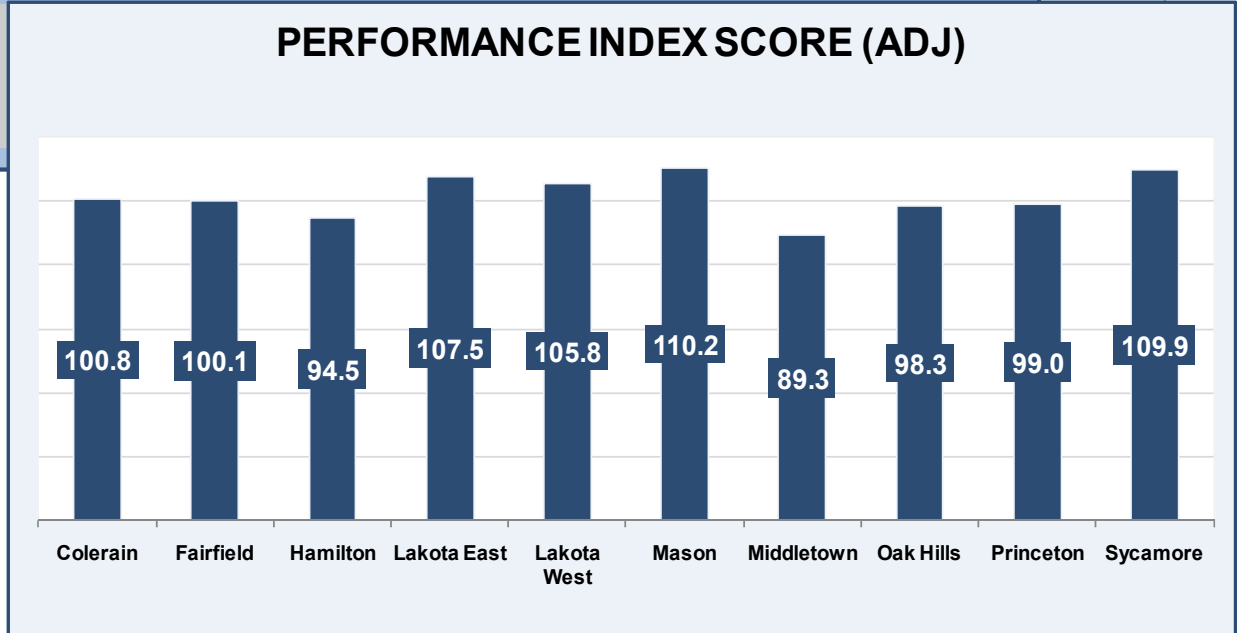
GERBER ANALYTICS, LLC

# OHIO GRADUATION TEST LEAGUE ACADEMIC PERFORMANCE

## GREATER MIAMI CONFERENCE

**LEAGUE CHAMPION --  
MASON**

- . 1ST - PERFORMANCE INDEX SCORE (ADJUSTED FOR 10TH GRADERS)
- . 1ST - MATHEMATICS
- . 2ND - READING
- . 2ND - SCIENCE
- . 1ST - SOCIAL STUDIES
- . 2ND - WRITING
- . 1ST - PERCENTAGE OF STUDENTS WHO PASSED ALL FIVE TESTS



CLICK BELOW FOR MORE INFORMATION

- [?](#)
- [PERFORMANCE BY HIGH SCHOOL](#)
- [BY SUBJECT](#)
- [3 YEAR PERFORMANCE BY HIGH SCHOOL - GROUP 1](#)
- [G 2](#)
- [G 3](#)
- [G 4](#)
- [G 5](#)
- [PASSED 5](#)

# HOW TO INTERPRET THIS ANALYSIS

First, please commend Ohio students for embracing the Ohio Graduation Test and for using these tests to show that they have **mastered the material** necessary to show that they truly **deserve** an Ohio High School degree.

The purpose of this analysis is to provide another way to look at the Ohio Graduation Test (OGT) results. The Ohio Department of Education (ODE) provides schools with excellent information in their report cards but “**state-wide**” comparisons are not as effective as “**league-wide**” comparisons. People want to know how “people just like them” are performing. This analysis allows communities to do that.

For generations, **communities** have gone to high school sporting events to cheer on their teams. Most communities know how their basketball and football teams have performed year after year. Now the same approach can be used with **academics**. Are your school's Mathematics skills first in the league or last? Are your Mathematics results better than your **cross town rival's**?

Just as in sports, a great teacher cannot turn a tenth grade Mathematics class into league champions after seven months of instruction, especially if the students have not received a sound foundation in previous grades. Through the support of parents, teachers, students, and the community, your school can become league champions if there is **focus** on those subjects that need additional attention. First though, you need to know where you stand versus the other schools in your league.

As many already know, this analysis is just **one piece of the puzzle** to determine the quality of a school. Other ways to identify quality schools include: talking with current customers of the school, checking how their students performed on other standardized tests, looking at where their graduates go to college, and quizzing recent graduates on how well they were prepared for college.

Understanding the charts is pretty straightforward. The **dark blue** portion identifies those students who have obtained a score of **proficient or better** (and who will not be required to retake the test again prior graduation). The **light blue** identifies the students who have earned **accelerated or better**. **Light gray** identifies those students who scored **advanced**.

Please note that this analysis only includes the **tenth grade** students for each of the respective years. This data was obtained from the Ohio Department of Education's report card data bank and files.

The Performance Index Score (Adjusted for 10th Graders) is an important part of the analysis and its computation is available [here](#).

While due care was used in creating these reports, there could be errors. If an error is found, please contact me and it will be corrected. Please also give me proper attribution if you use any part of this report.

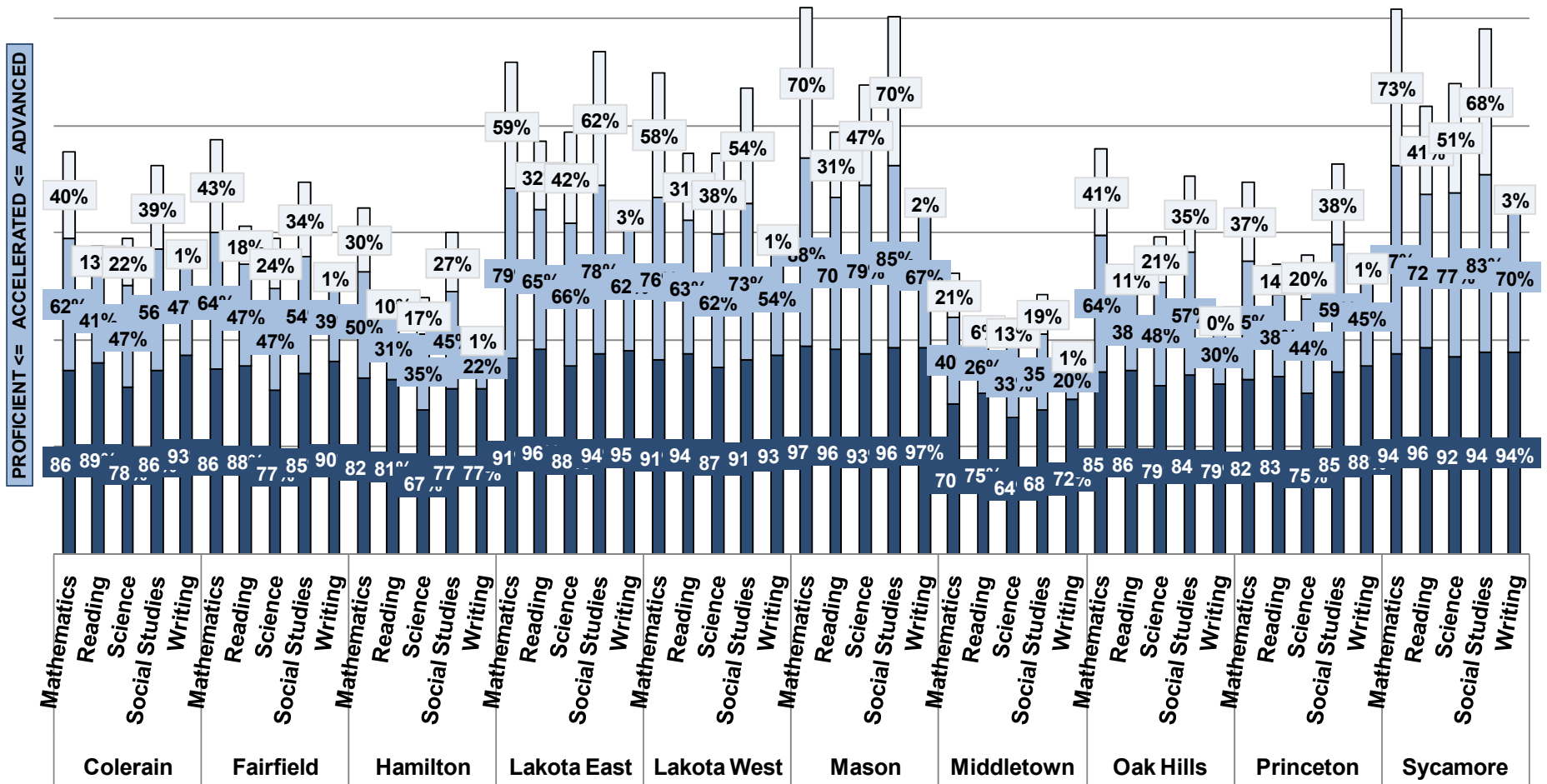


Look for upward trending performance.

How well is your school doing in Mathematics versus the other schools in the league?

Look how the school is performing across all of its subjects.

# PERFORMANCE BY HIGH SCHOOL 2010

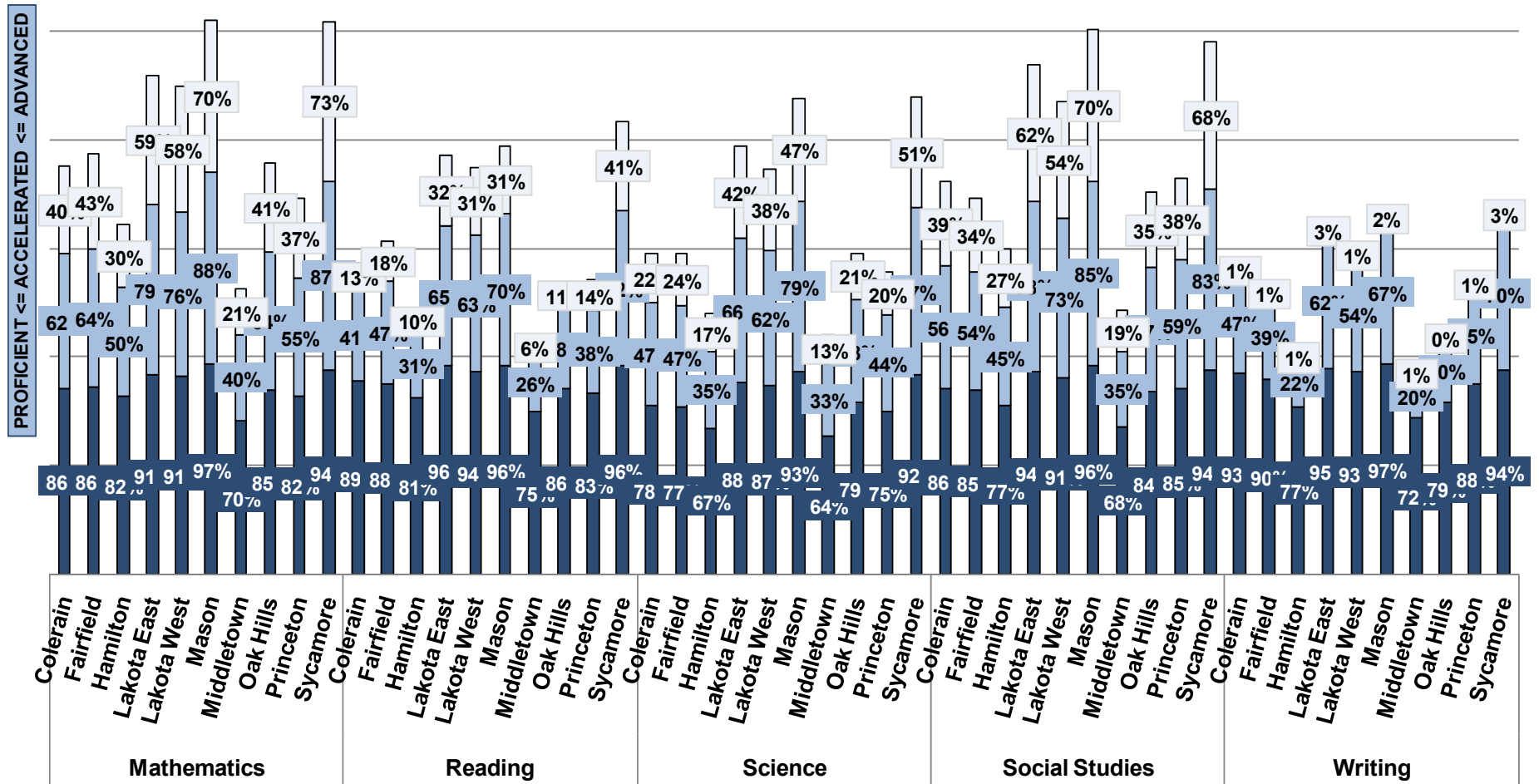


NEXT CHART

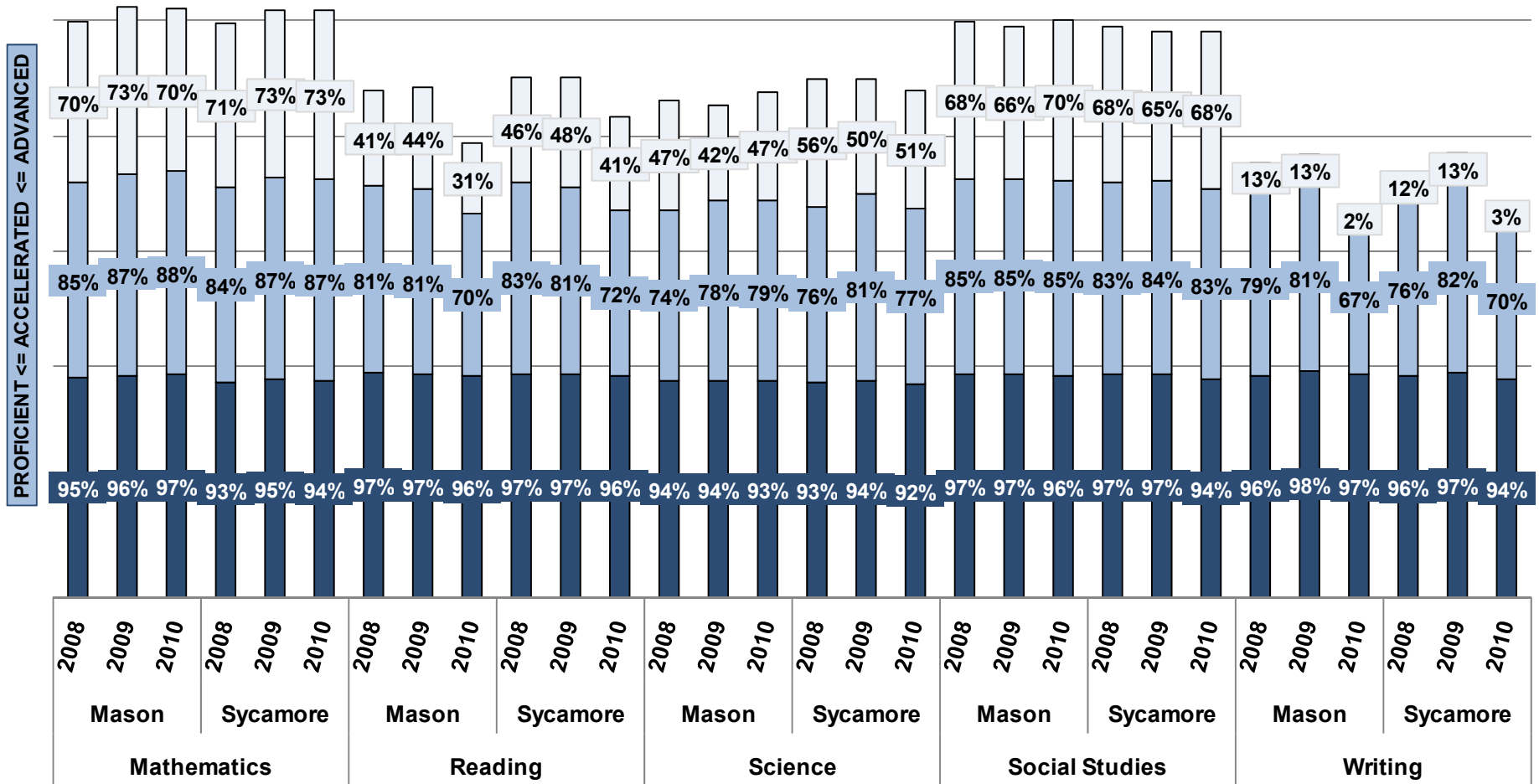
PREV PAGE

PAGE ONE

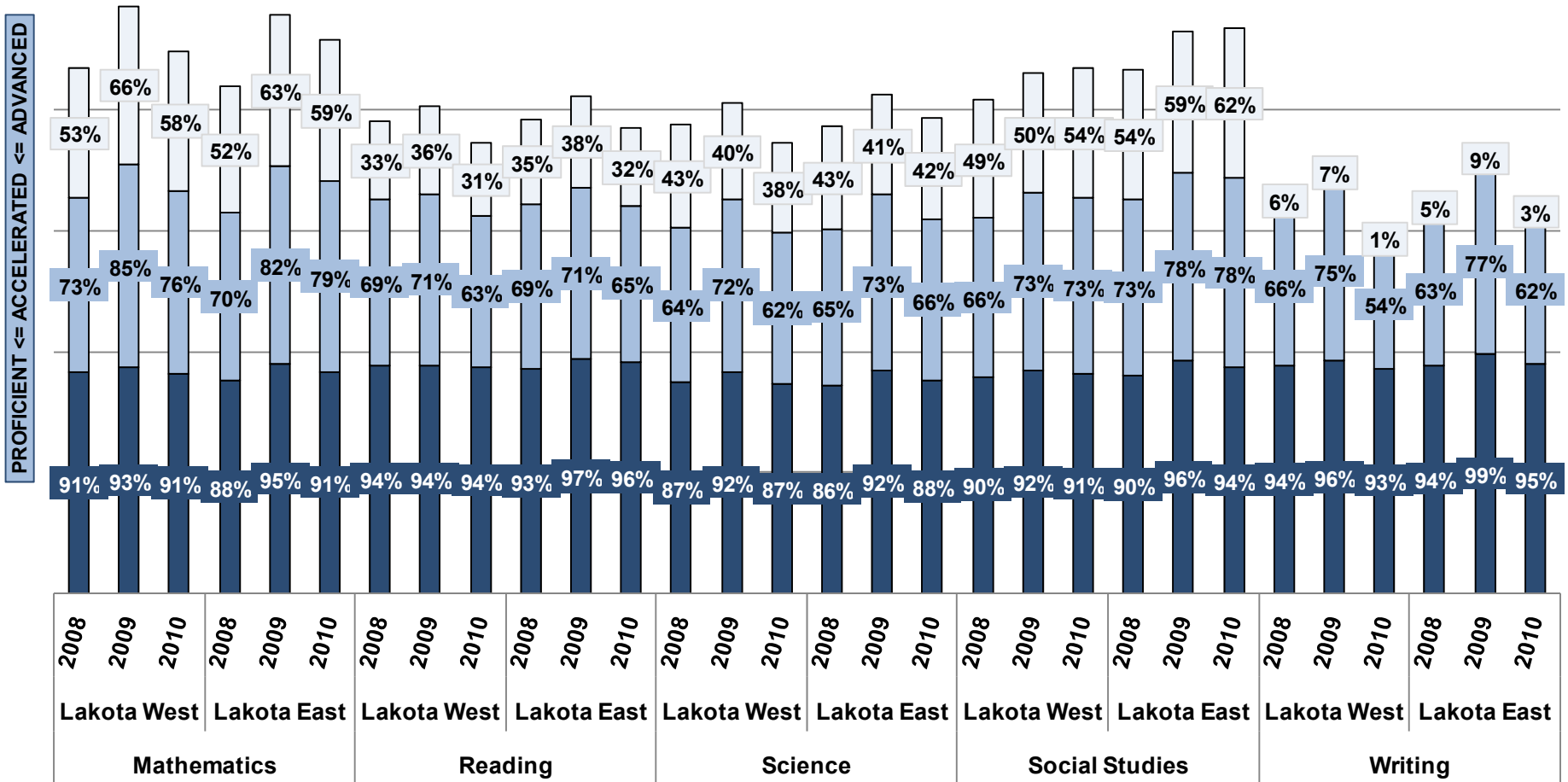
# PERFORMANCE BY SUBJECT 2010



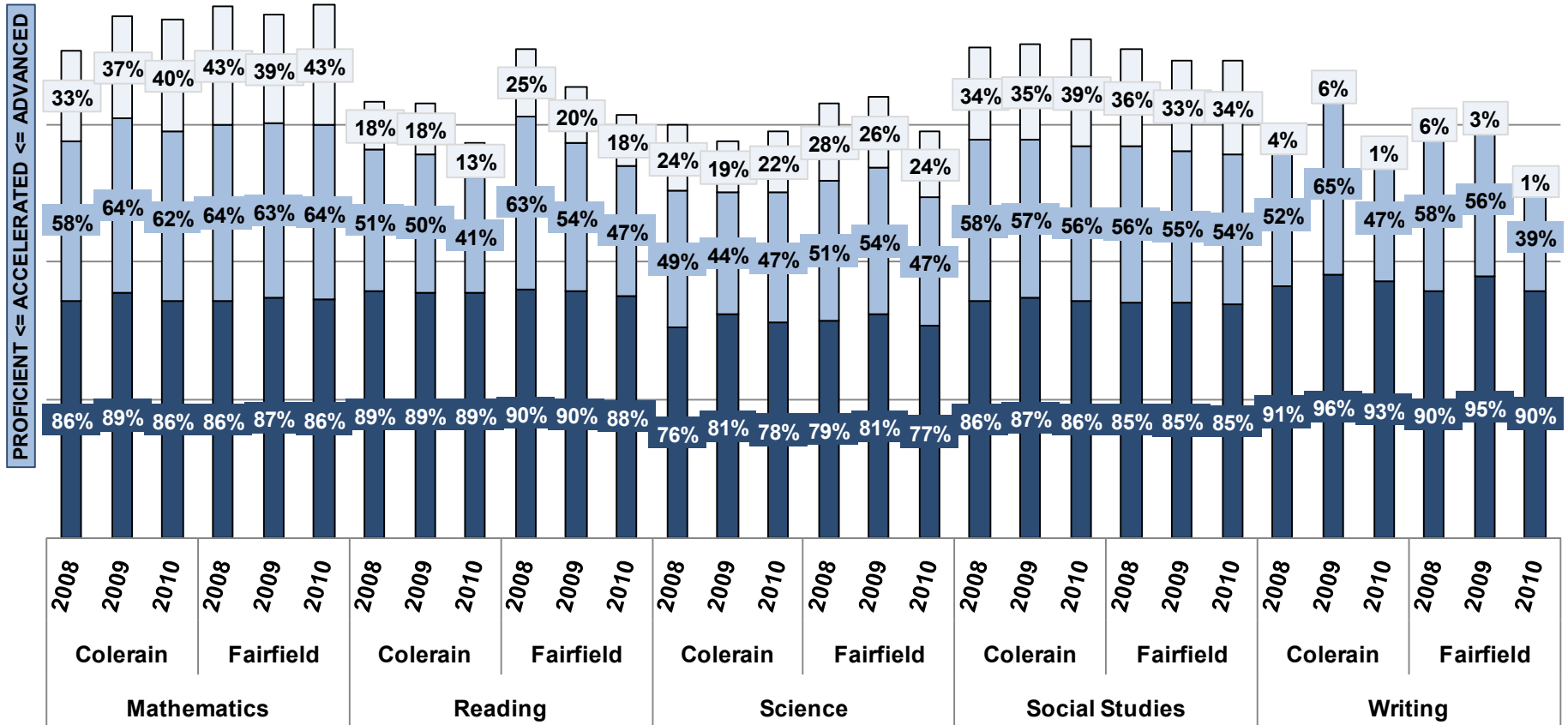
# THREE YEAR PERFORMANCE BY HIGH SCHOOL



# THREE YEAR PERFORMANCE BY HIGH SCHOOL



# THREE YEAR PERFORMANCE BY HIGH SCHOOL

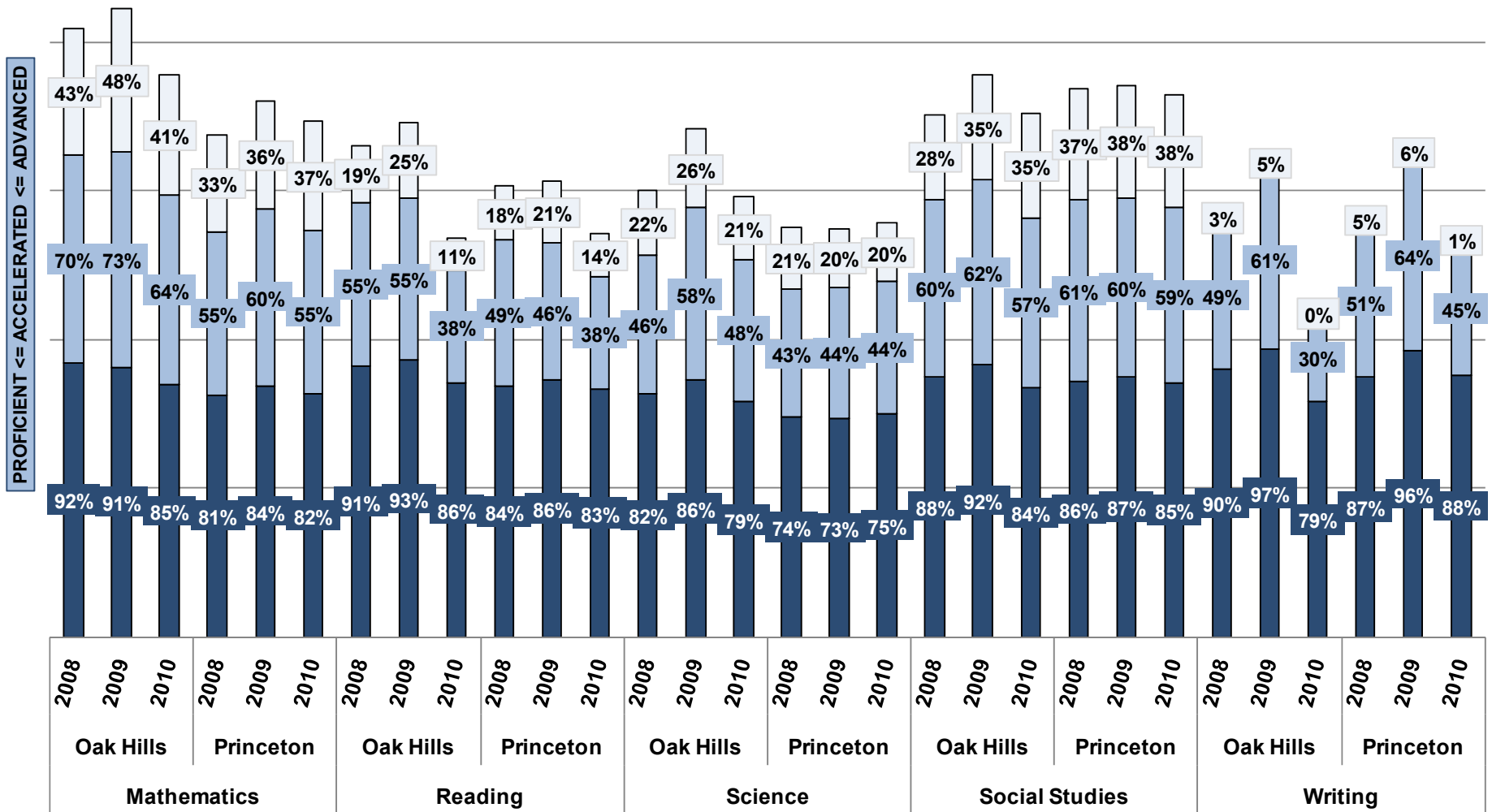


NEXT CHART

PREV CHART

PAGE ONE

# THREE YEAR PERFORMANCE BY HIGH SCHOOL

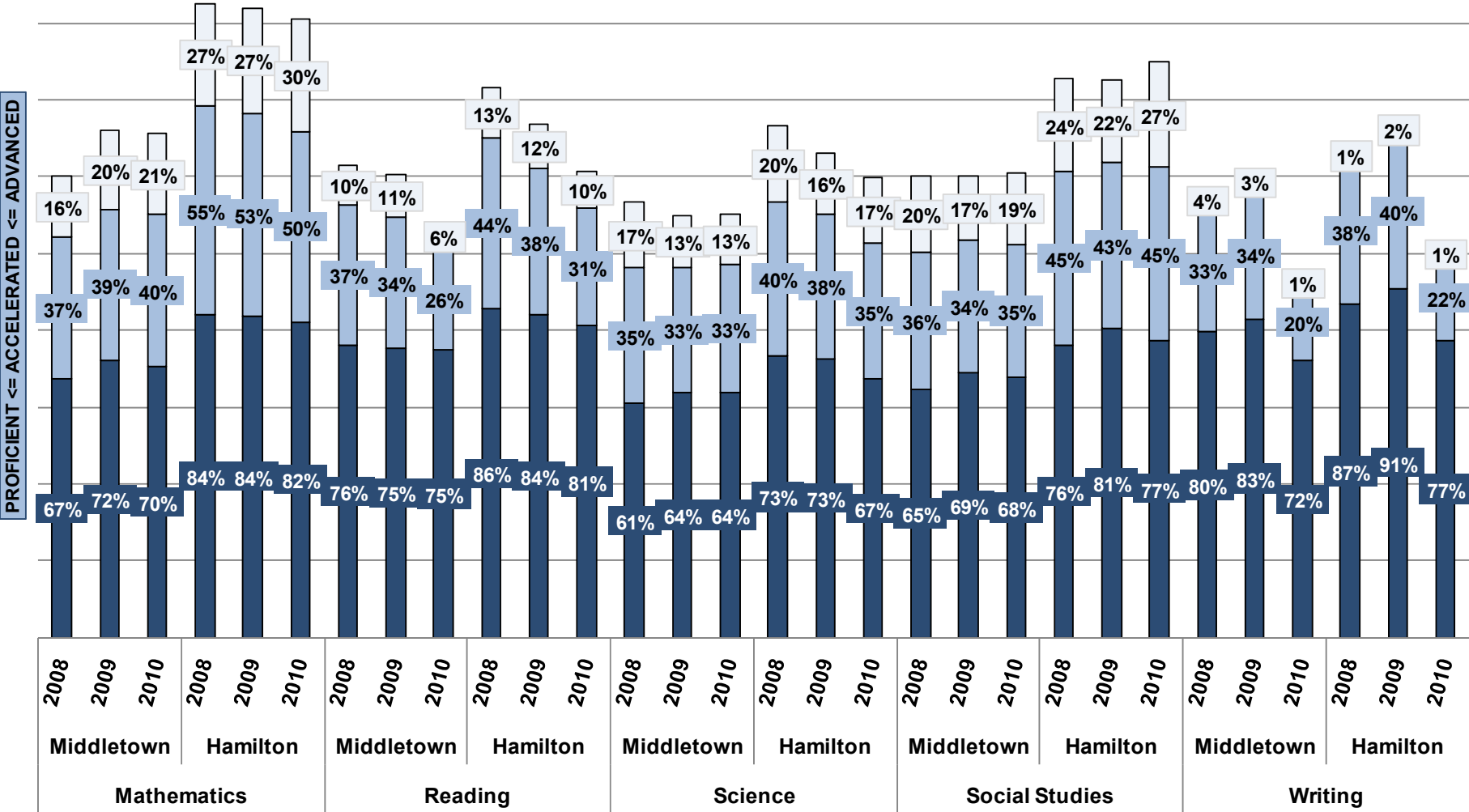


[NEXT CHART](#)

[PREV CHART](#)

[PAGE ONE](#)

# THREE YEAR PERFORMANCE BY HIGH SCHOOL

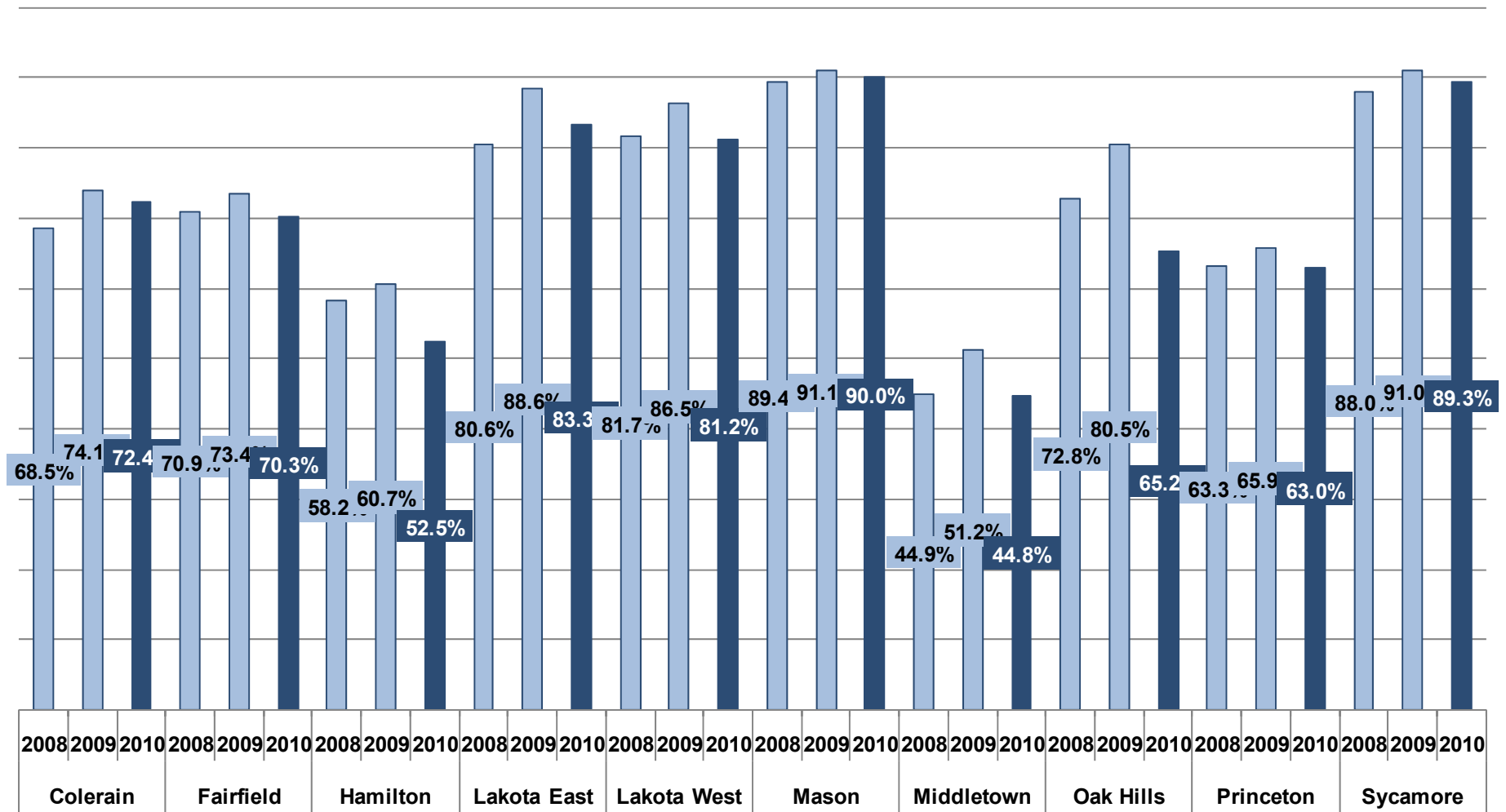


[NEXT CHART](#)

[PREV CHART](#)

[PAGE ONE](#)

## % OF STUDENTS WHO PASSED ALL FIVE TESTS



These 10th grade students will not be required to retake any portion of the test.

# PERFORMANCE INDEX SCORE (ADJUSTED)

Note that the Performance Index Score (Adjusted) is different from what you may have seen on the Ohio Department of Education’s Report Card. The calculation in this document is **only** for the **10th grade students**. It also does not include any students who did not take the test. It was calculated as follows:

## Ada High School

Subject	Below Basic	Basic	Proficient	Accelerated	Advanced	
Mathematics	9.6%	9.6%	25.0%	21.2%	34.6%	
Reading	3.8%	5.8%	42.3%	36.5%	11.5%	
Science	3.8%	19.2%	25.0%	23.1%	28.8%	
Social Studies	15.4%	9.6%	23.1%	23.1%	28.8%	
Writing	5.8%	5.8%	40.4%	46.2%	1.9%	
Total of Above	38.4%	50.0%	155.8%	150.1%	105.6%	
Average of 5	7.7%	10.0%	31.2%	30.0%	21.1%	
Factor	0.3	0.6	1	1.1	1.2	
Average * Factor	2.3	6.0	31.2	33.0	25.3	Summation <b>97.8</b>

It was necessary to create this 10th grade only version of a Performance Index Score for a better “apples to apples” comparison of all schools (both private and public).